

# A greener, healthier, more inclusive Europe

**Michael Marmot**

**@MichaelMarmot**

**[www.instituteofhealthequity.org](http://www.instituteofhealthequity.org)**

**Gastein**

**5 October 2018**





**INHERIT**  
Health | Equity | Environment

**INHERIT focus areas:**

**living**

**moving**

**consuming**

*Fair Society, Healthy Lives: 6 Policy Objectives*

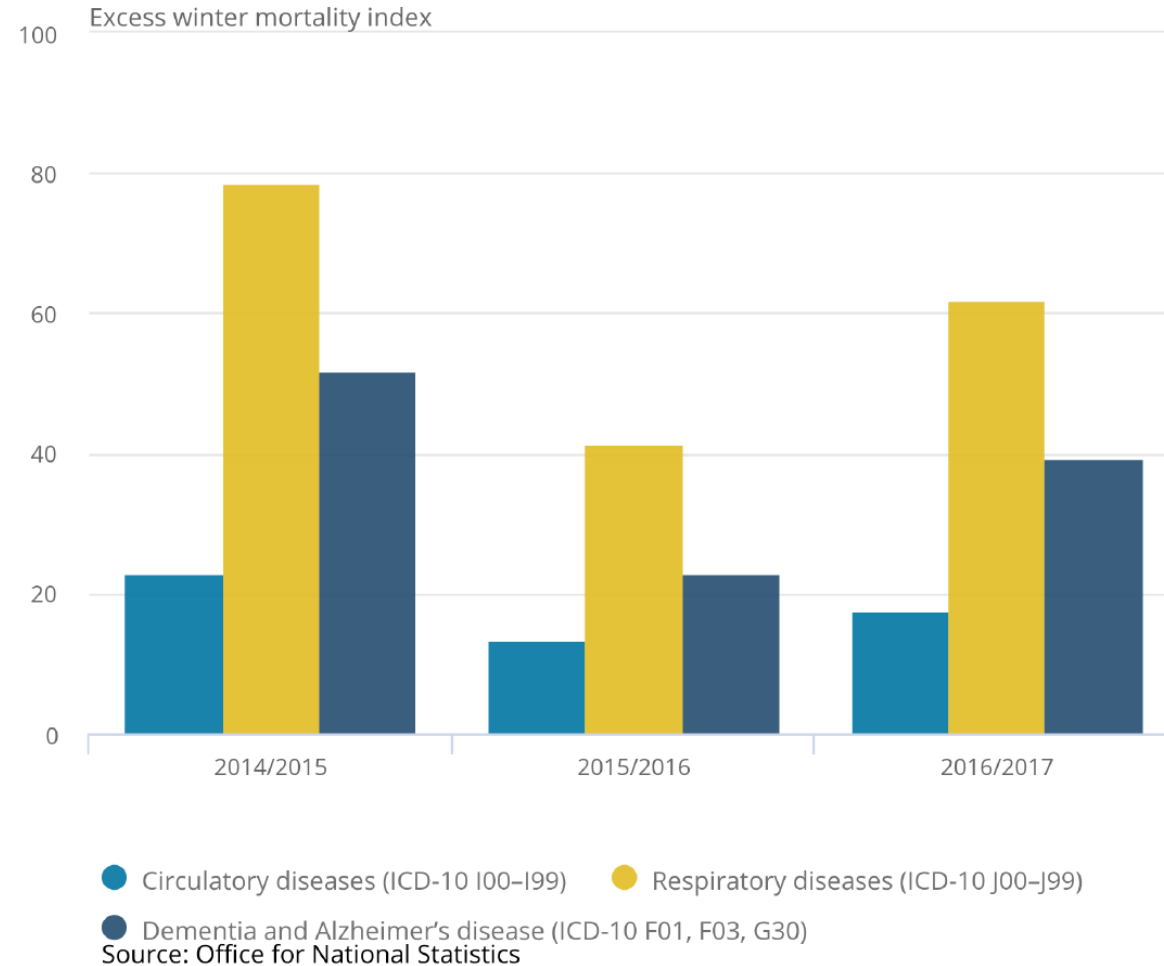
- A. Give every child the best start in life**
- B. Enable all children, young people and adults to maximise their capabilities and have control over their lives**
- C. Create fair employment and good work for all**
- D. Ensure healthy standard of living for all**
- E. Create and develop healthy and sustainable places and communities**
- F. Strengthen the role and impact of ill health prevention**



# Living

- Energy efficient housing - cold and damp homes
- Green space
- Environmental benefits

## Excess winter mortality index, by underlying cause of death, England and Wales, between 2014 to 2015 and 2016 to 2017



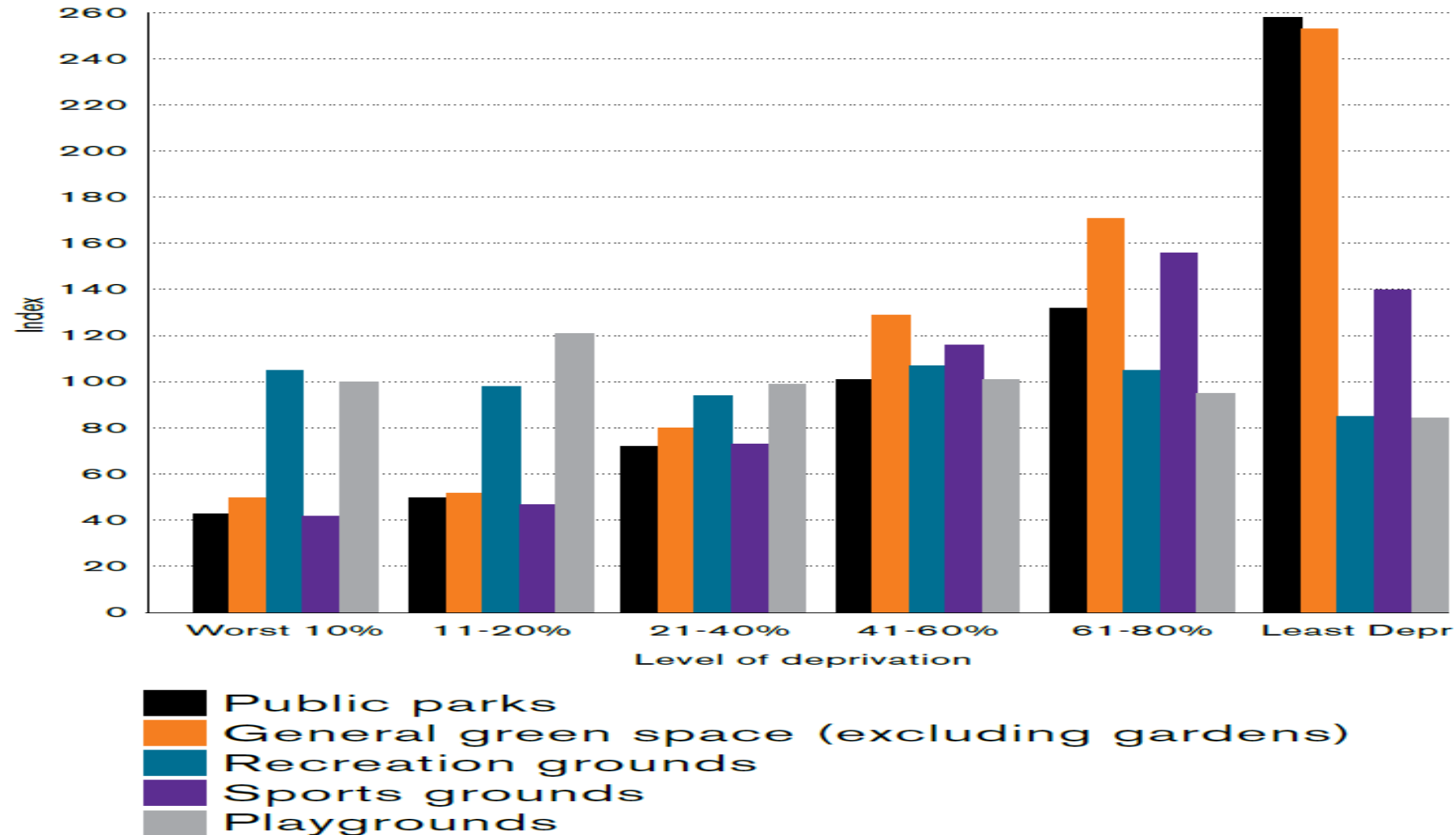
- **“Based on the average of the last five winters, an estimated **9,660 people die in the UK each winter from conditions attributable to living in a cold home**”**

**Source: Cold homes and excess winter deaths a preventable public health epidemic that can no longer be tolerated , Guertler & Smith 2018**

# Excess Winter Mortality Index for 30 European countries, 1980-2013

Country	EWM index	Country	EWM index
Malta	29.4	Slovenia	13.2
Portugal	28.0	Hungary	12.3
Cyprus	23.6	Denmark	12.2
Spain	20.6	Norway	12.1
Ireland	19.7	The Netherlands	11.8
<b>UK</b>	<b>18.6</b>	Germany	11.7
Greece	17.9	Poland	11.7
Bulgaria	17.8	Latvia	11.5
Romania	17.5	Lithuania	11.5
Italy	16.0	Luxembourg	11.2
Switzerland	14.2	Estonia	10.9
France	13.8	Czech Republic	10.8
Belgium	13.6	Finland	9.5
Sweden	13.3	Iceland	8.4
Austria	13.2	Slovakia	8.2

# Green space and area deprivation: England

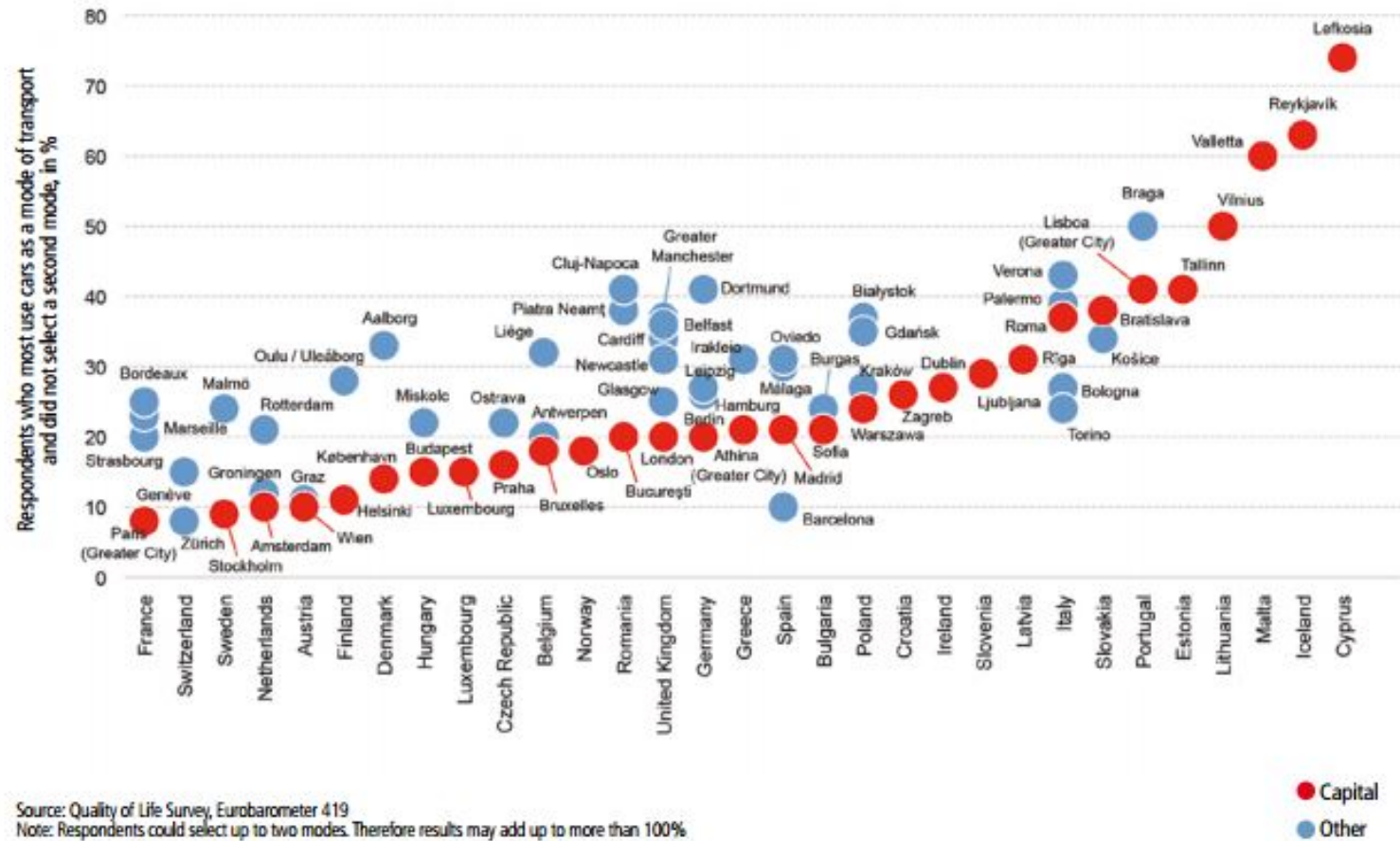




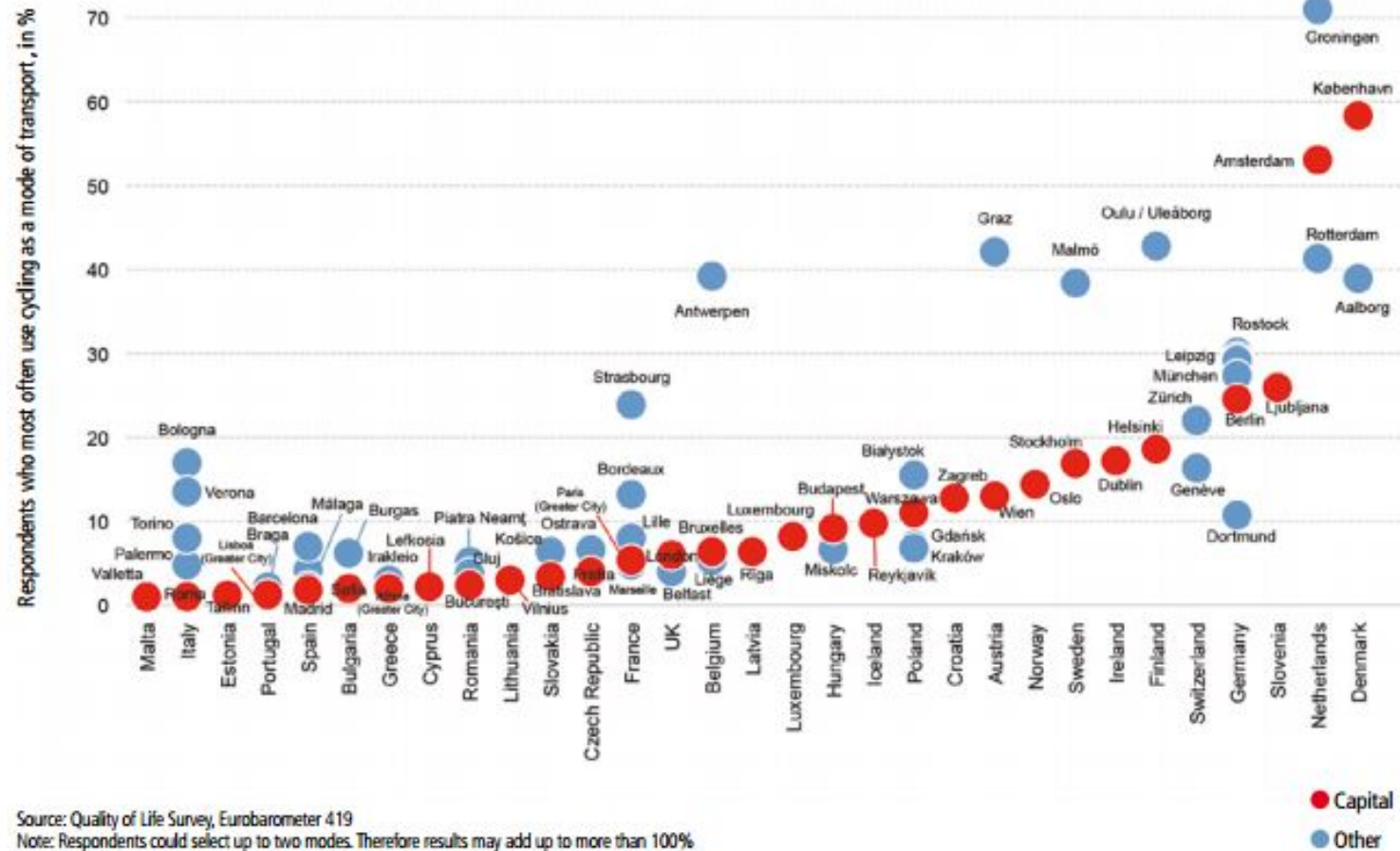
# Moving

- Active transport
- environmental and health benefits

# Car use in European cities 2015

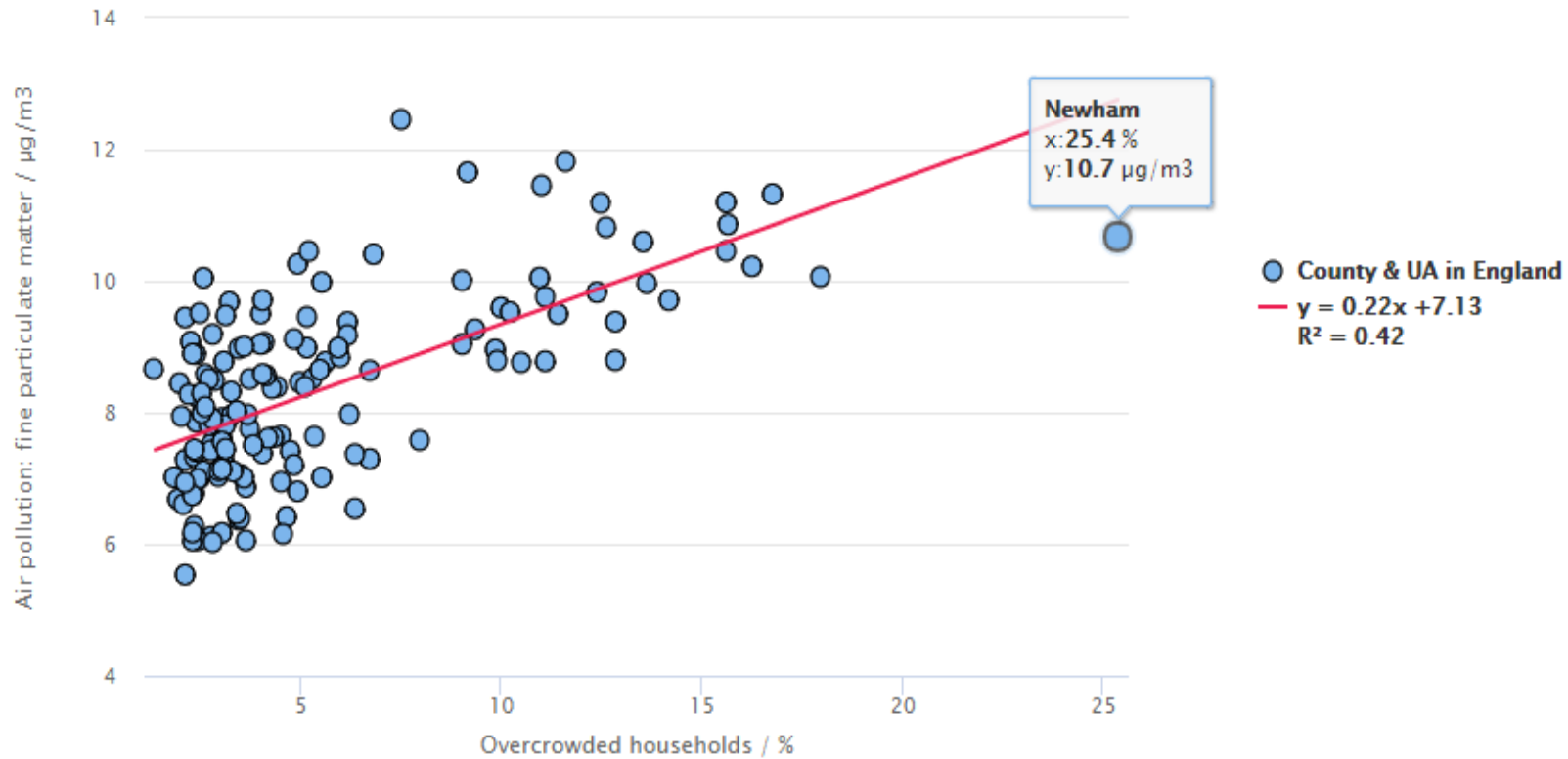


# Cycling in European Cities 2015



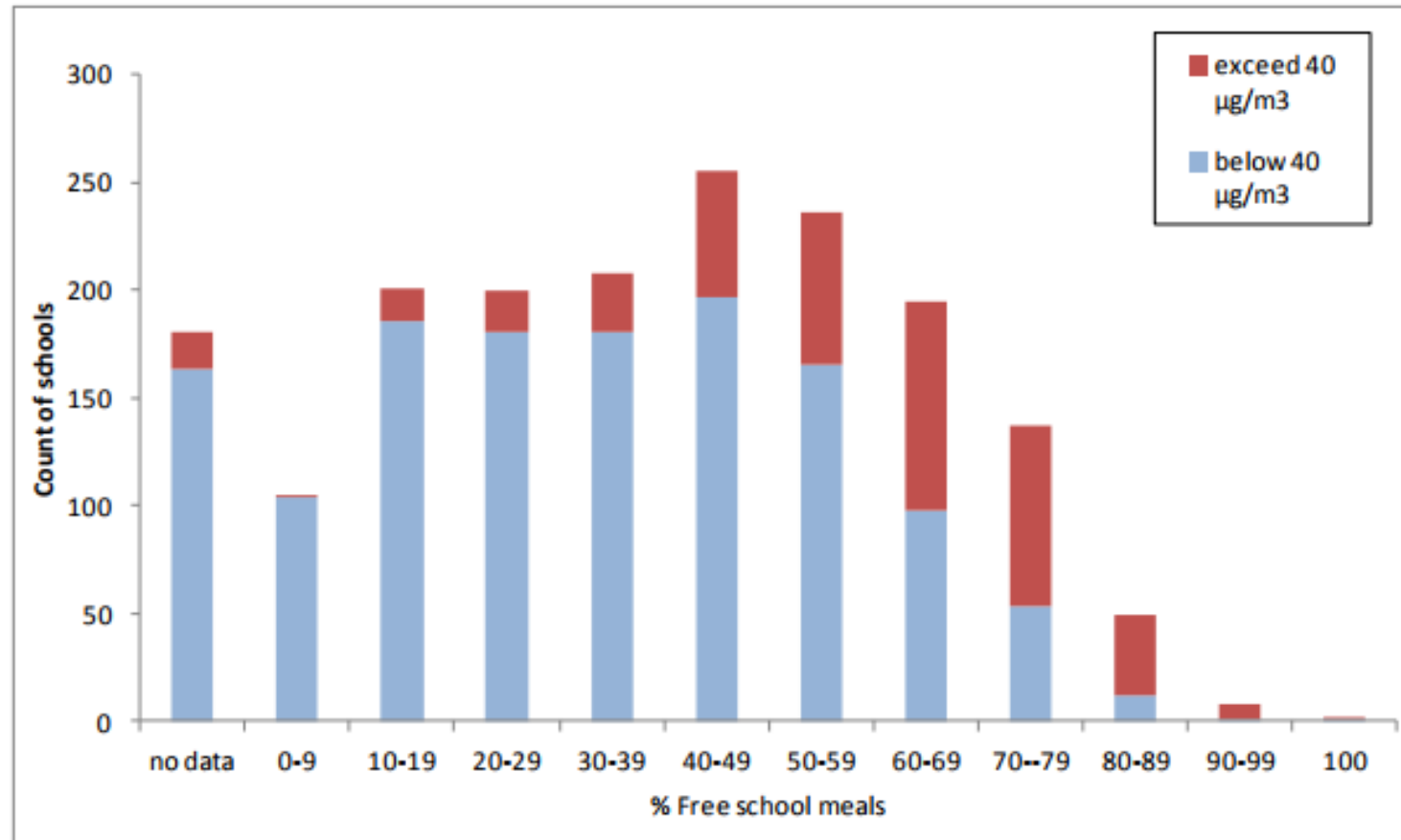
<https://ecf.com/news-and-events/news/state-eu-cities-report-interesting-cycling-data>

# Air pollution & deprivation levels



# Air pollution & schools in London

Figure E4 Count of schools grouped by the proportion of pupils eligible for Free School Meals and an NO<sub>2</sub> exceedance

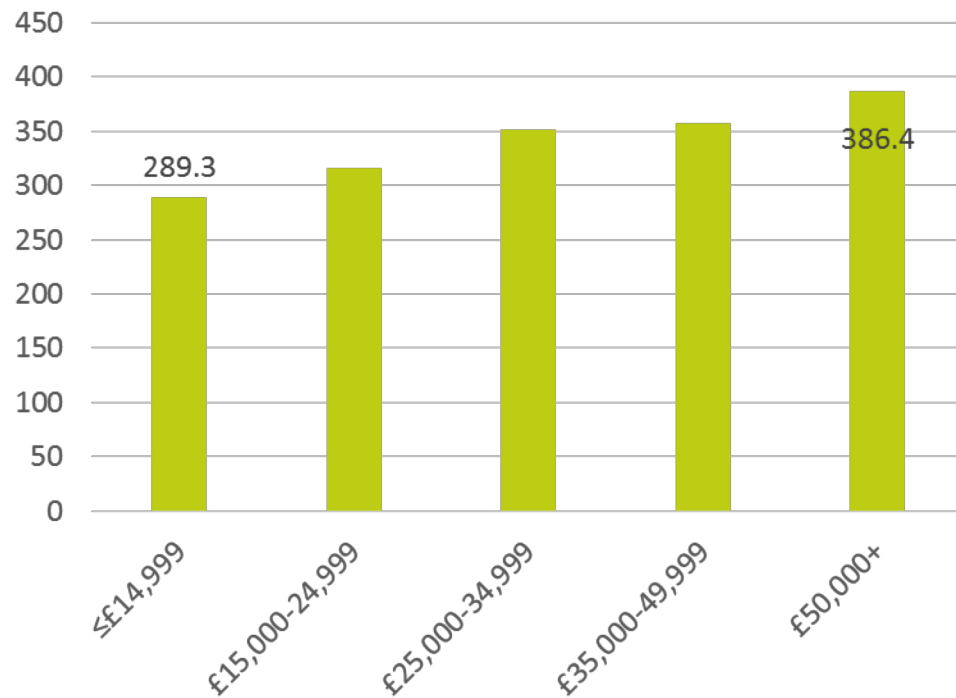


# Consuming: Diet is influenced by

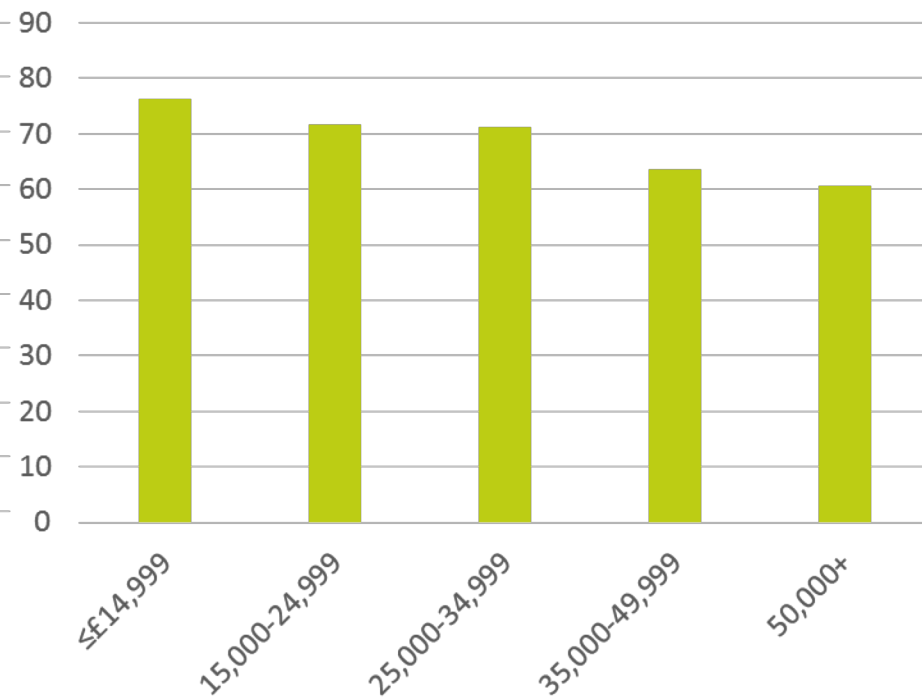
- Income
- Social environment
- Built environment
- Psychosocial
- Knowledge

# Dietary fruit & veg and red & processed meat by household income among adults (age ≥19 years) UK

## Mean intake (g/d) of fruit and veg by income group

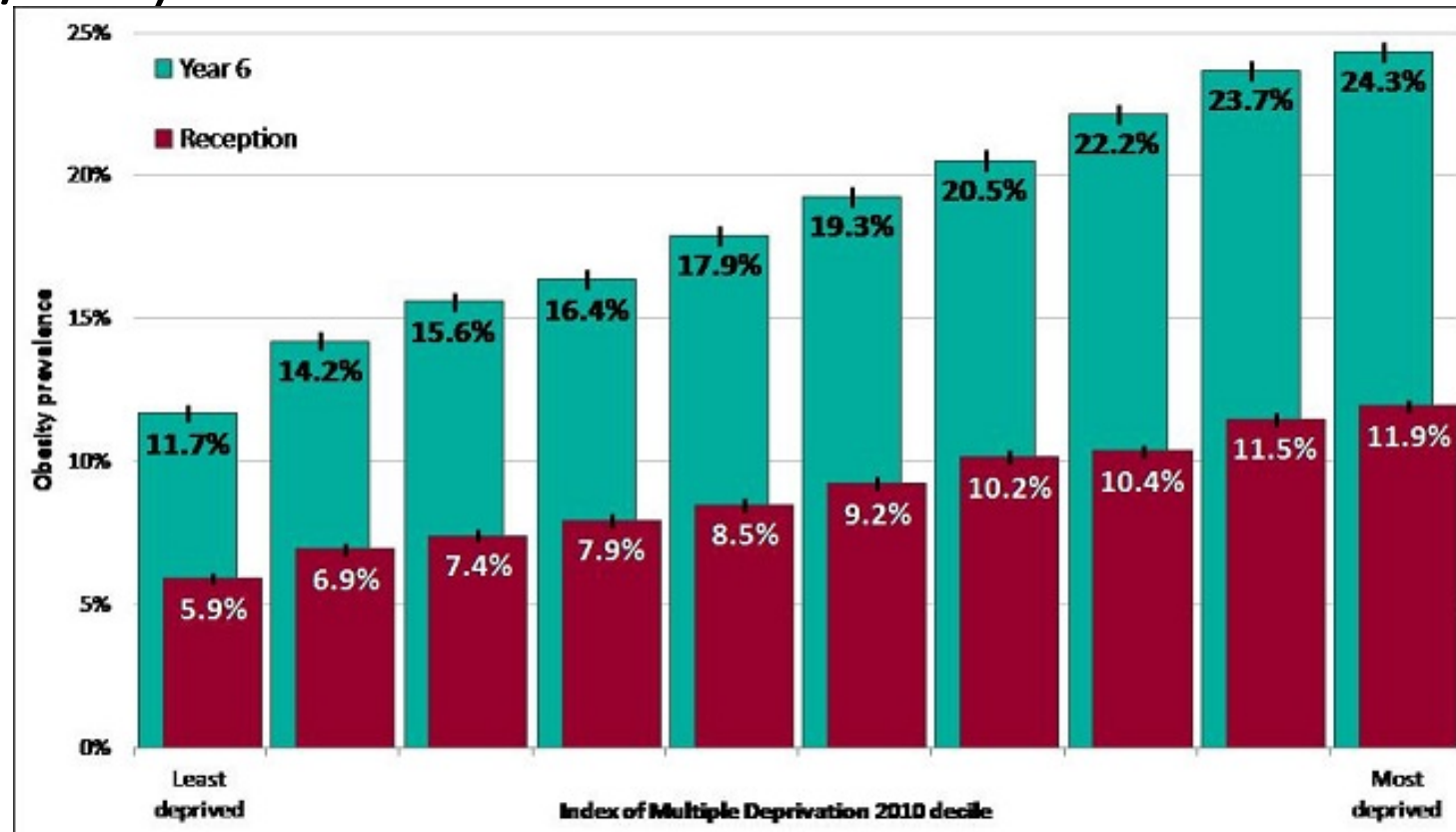


## Mean intake (g/d) of red and processed meat by income group



Maguire & Monsivais, British Journal of Nutrition (2015), 113, 181–189, analysis of the National Diet and Nutrition Survey 2008–2011

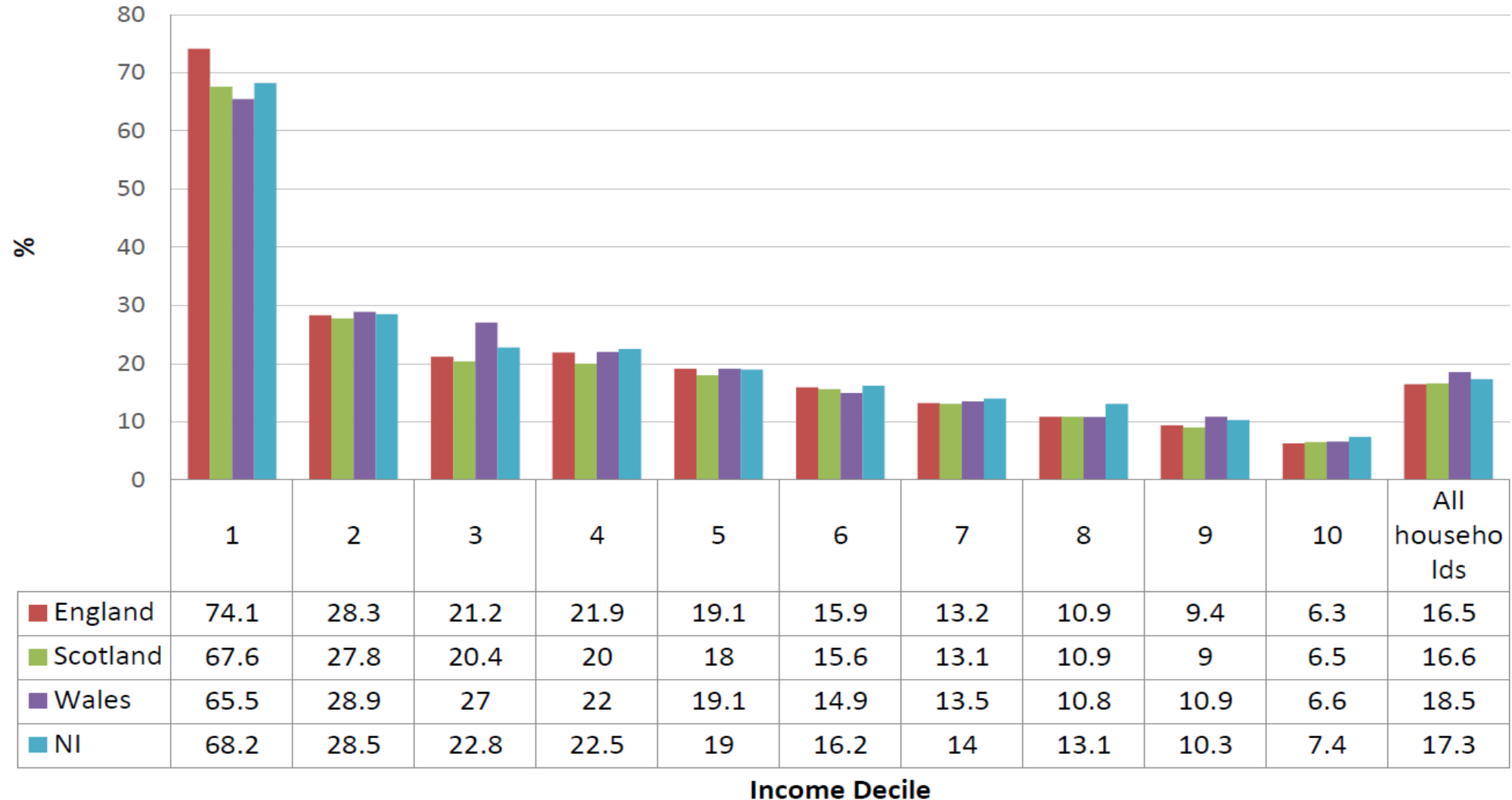
# Child obesity by deprivation decile: England (2012/13)



National Child Measurement Programme 2012/13



## Median % of disposable income used up if Eatwell guide was spent,



## Life expectancy at age 25 by education, men

